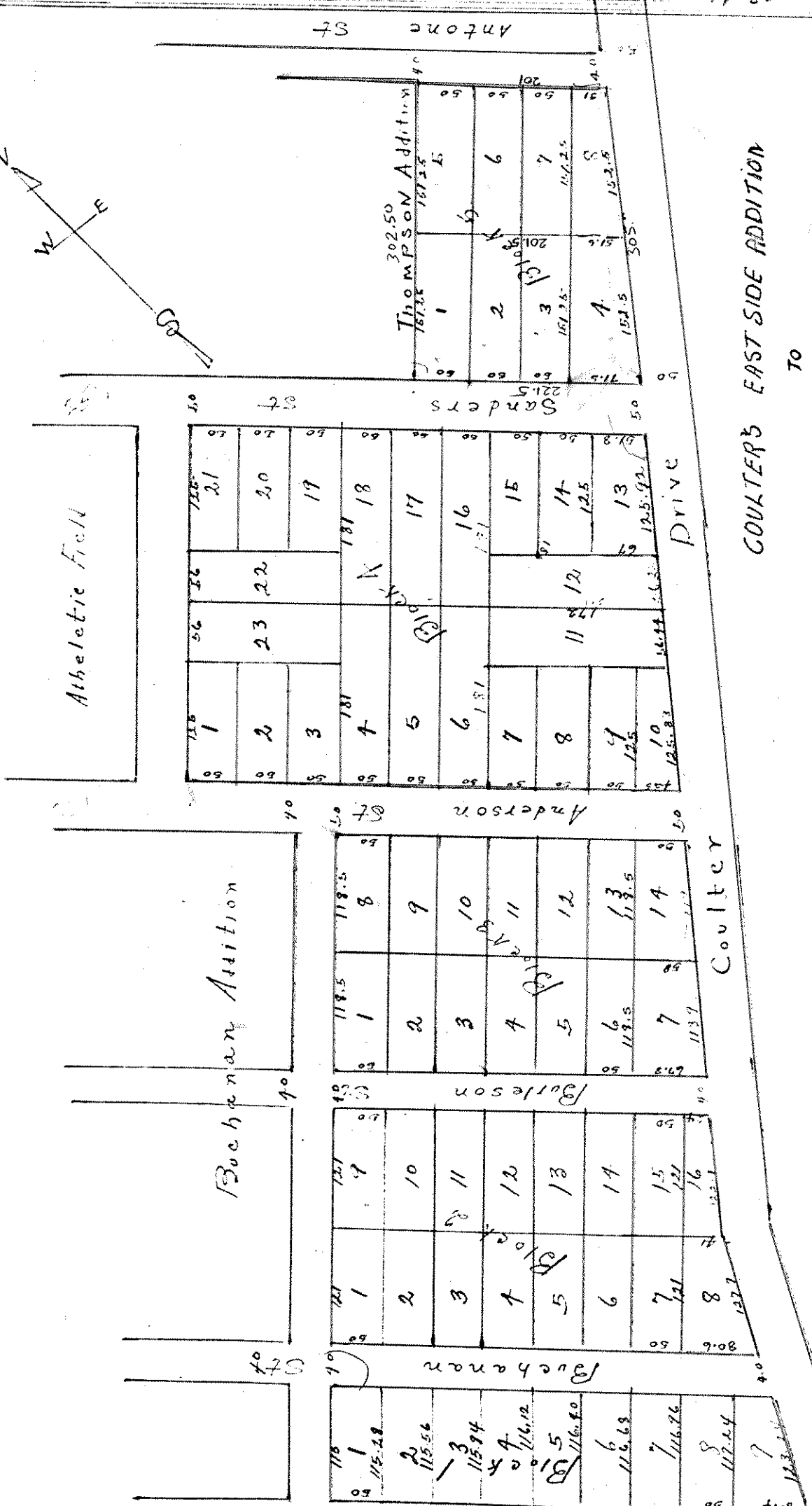
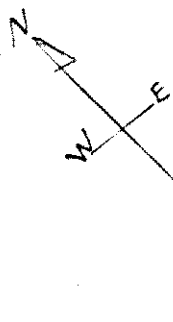


PLAT FROM COURTHOUSE

1/100 scale

97-86<sup>2</sup>



COULTER'S EAST SIDE ADDITION

TO

THE CITY OF BRYAN

Scale 1/100"

The foregoing is a true copy of the original instrument which was filed for record on the 12th day of Sept. A.D. 1938 at 9 o'clock a.m. and duly recorded on the 13th day of Sept. A.D. 1938 at 11 o'clock a.m. to which I certify

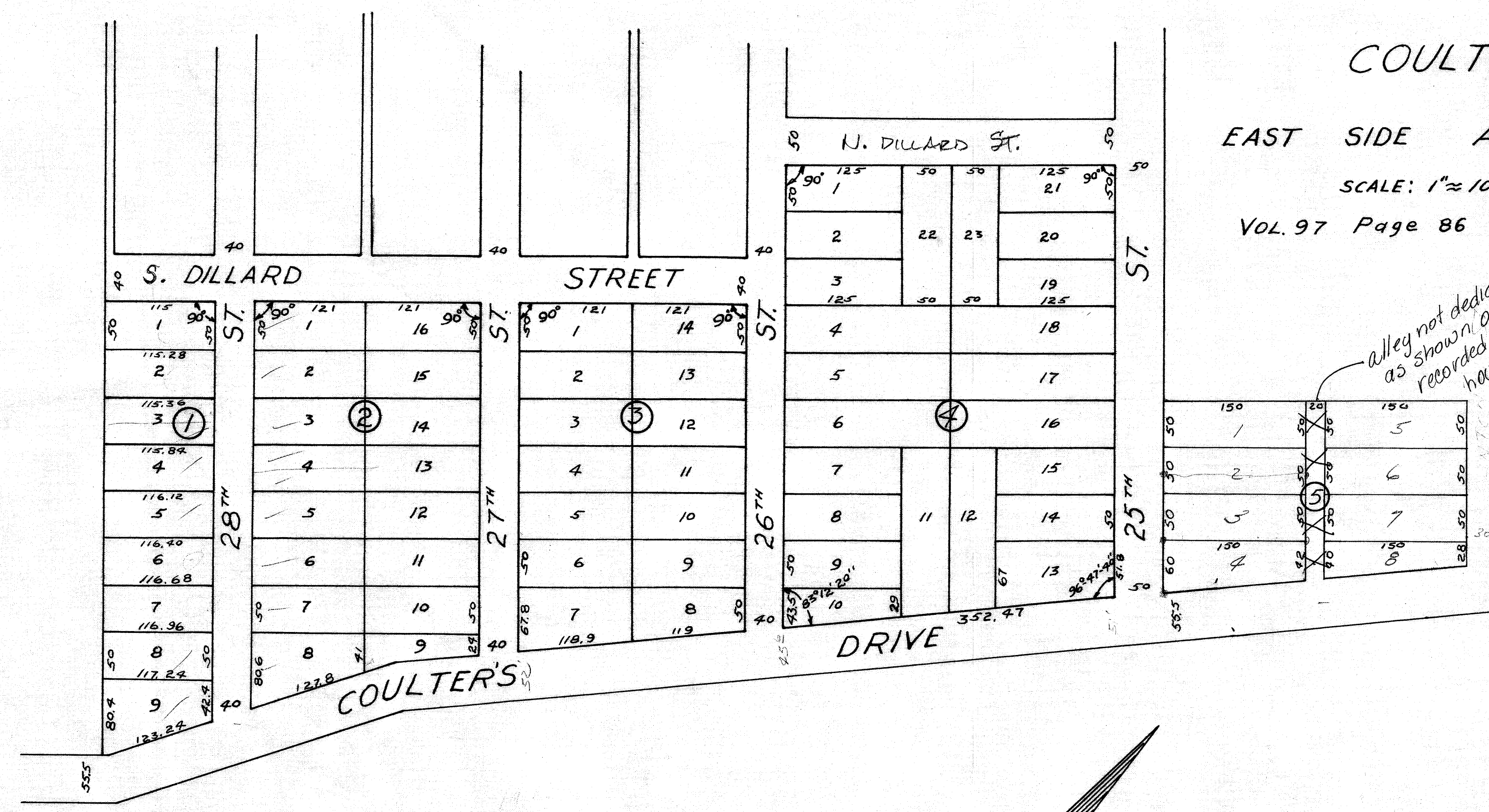
Frank Worsham, C. C. C. S. C.  
 BY *[Signature]* DEPUTY

# COULTER'S

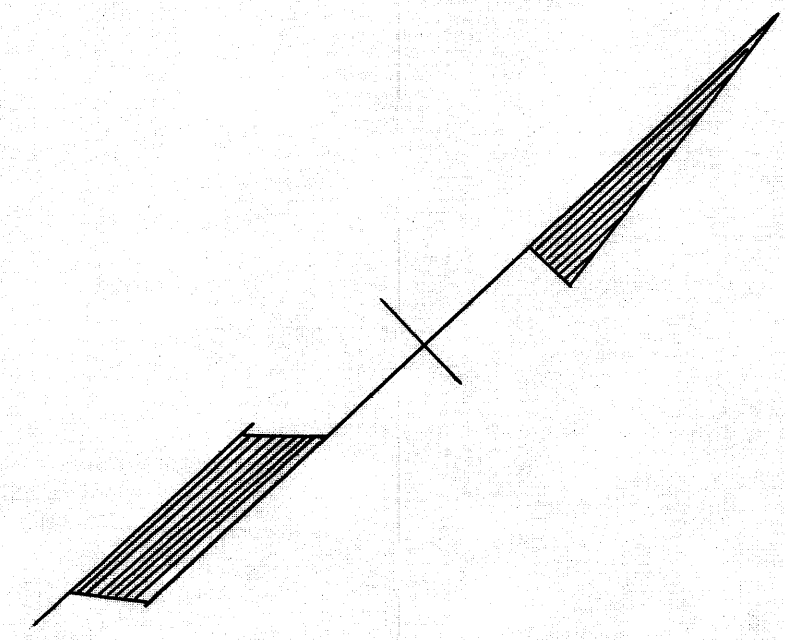
## EAST SIDE ADDITION

SCALE: 1" = 100'

VOL. 97 Page 86 SEPT. 13, 1938



Alley not dedicated  
 as shown on plat  
 recorded at court  
 house 1/60' elm



on books  
 of  
 notes